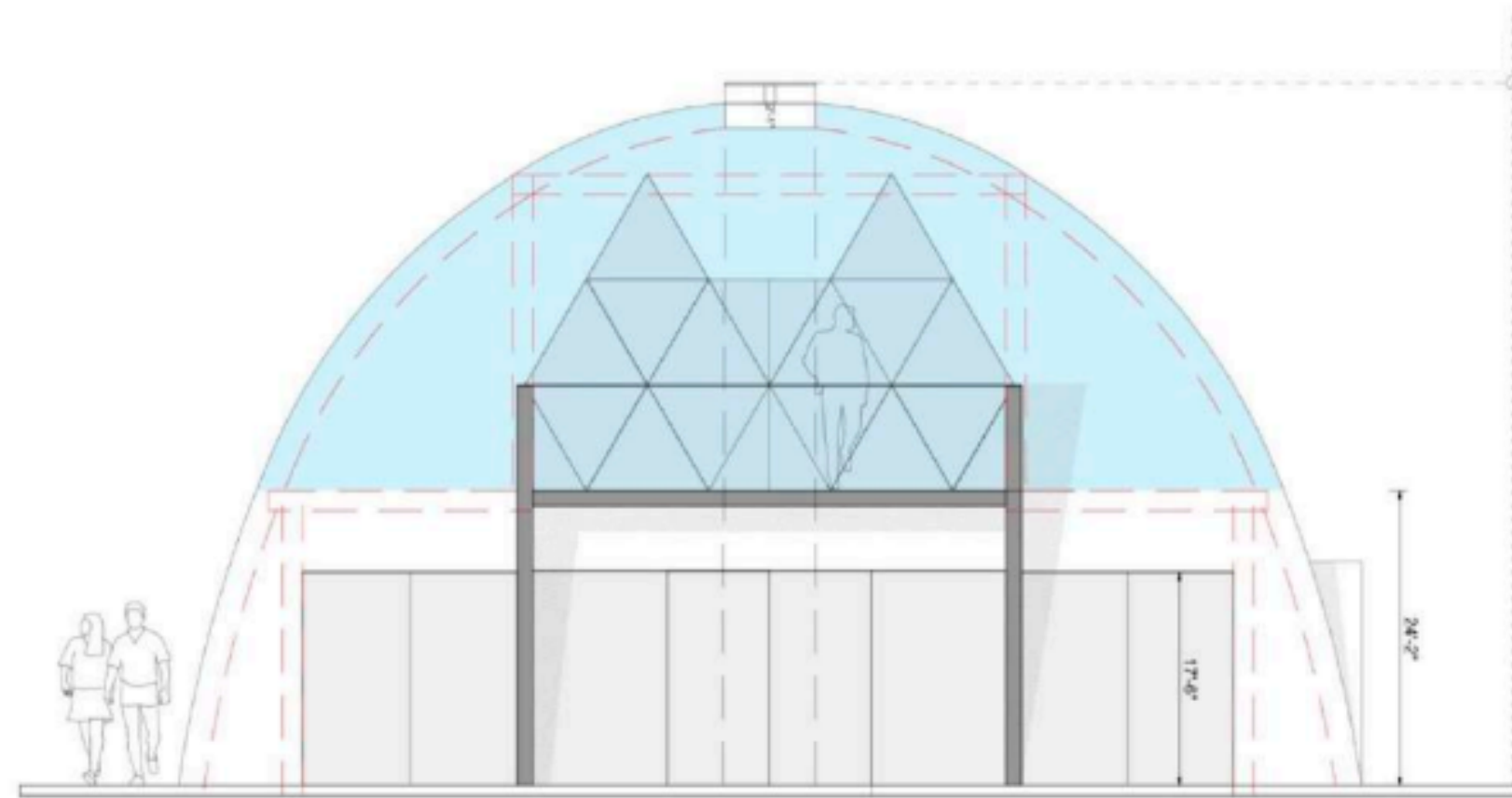




# Floor Plans

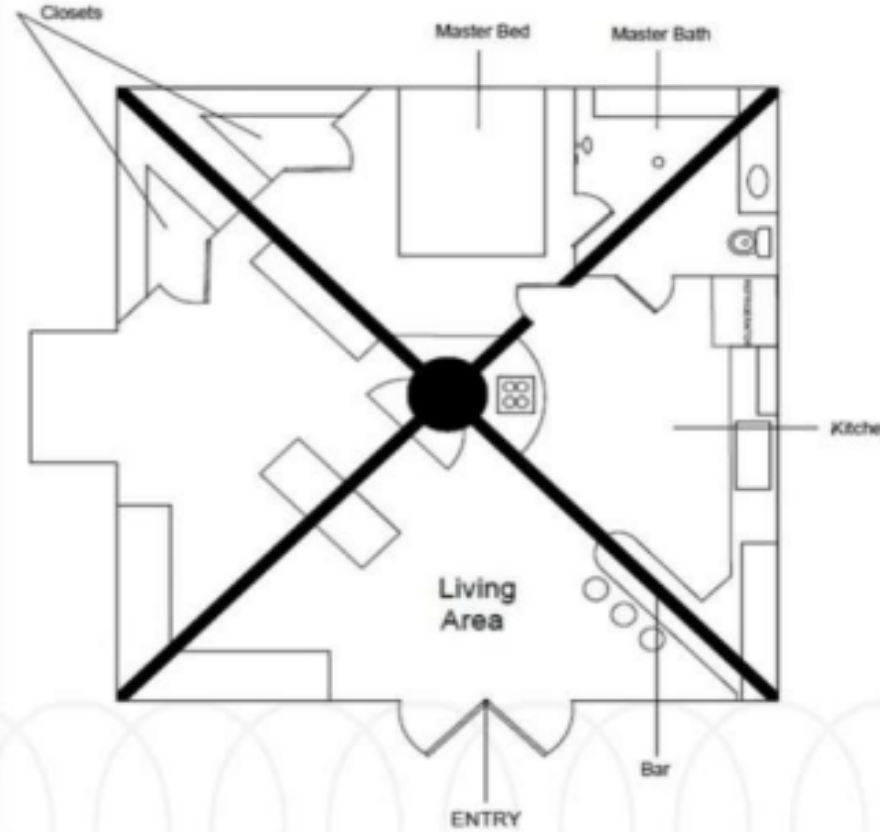


ELEVATION A  
1/4" = 1'-0"

# BOWWHOMES™ MODEL 1 STUDIO FLOOR PLAN



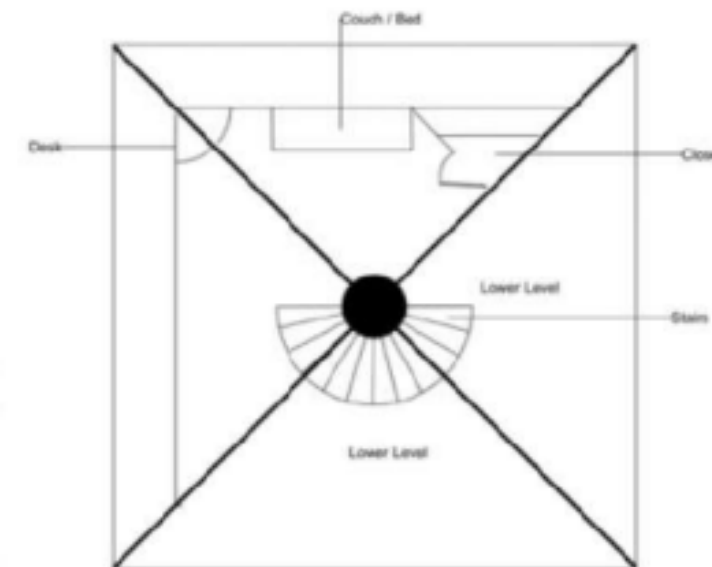
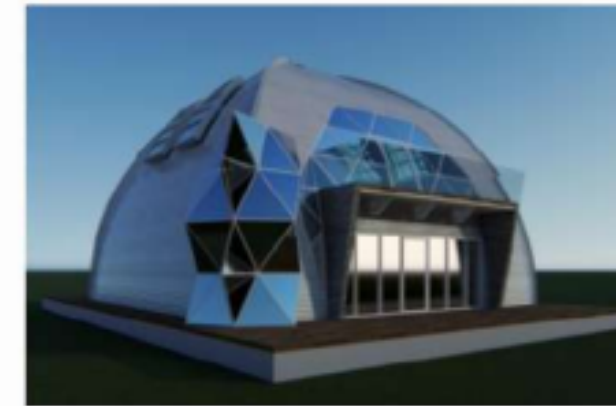
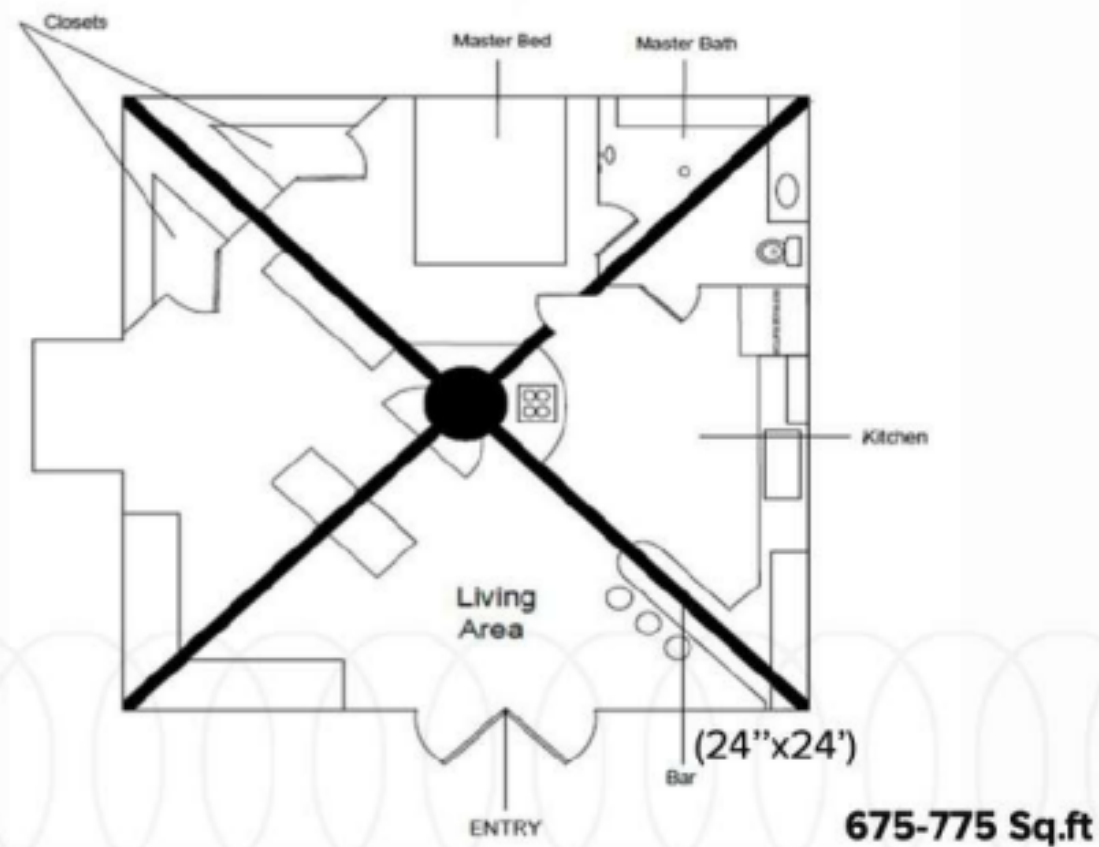
A Studio home, ideal for the modern solo millennial dreamer



**BOWW 1, Pod**  
400 Sq Ft w/ mini Loft  
Studio w/ Kitchenete

# BOWWHOMES™ MODEL 3 FLOOR PLAN

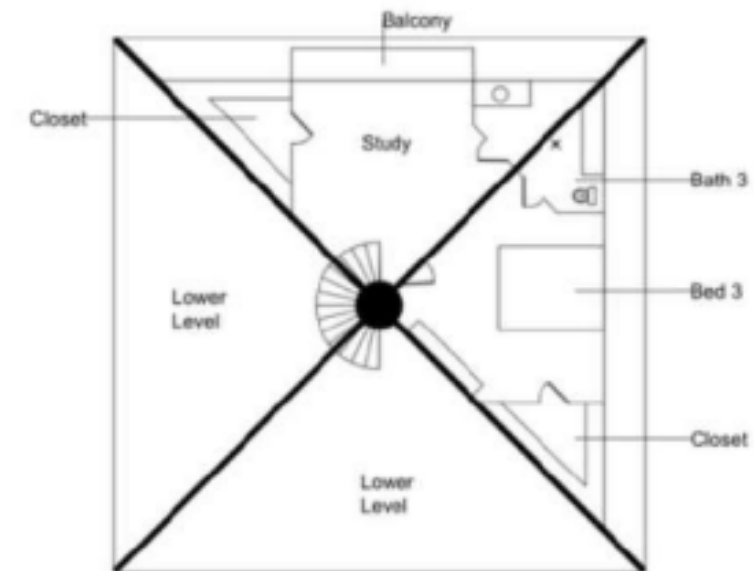
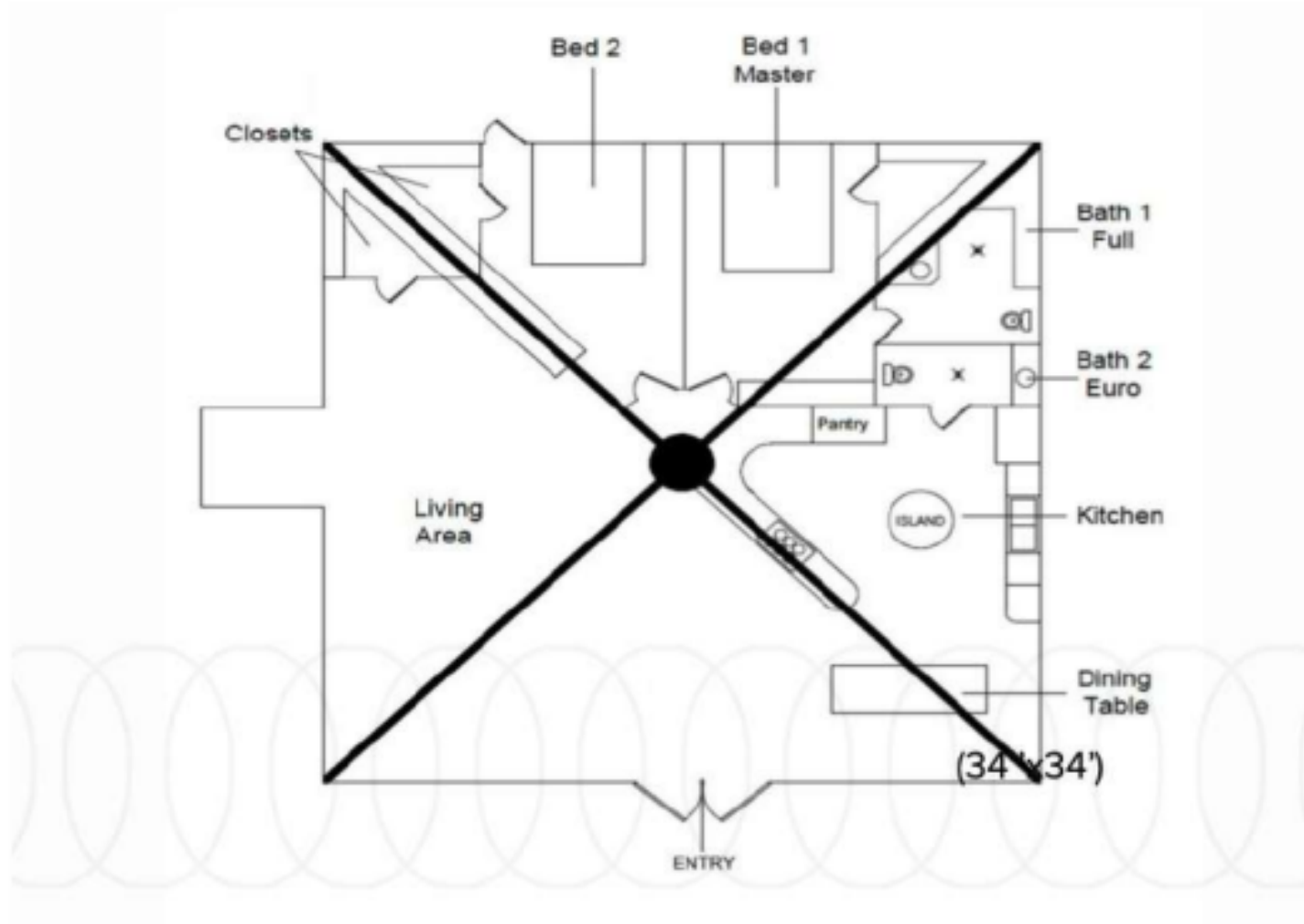
A compact family home for small families.



# BOWWHOMES™ MODEL 6 FLOOR PLAN



A cleverly equipped home meeting all the needs of a larger family



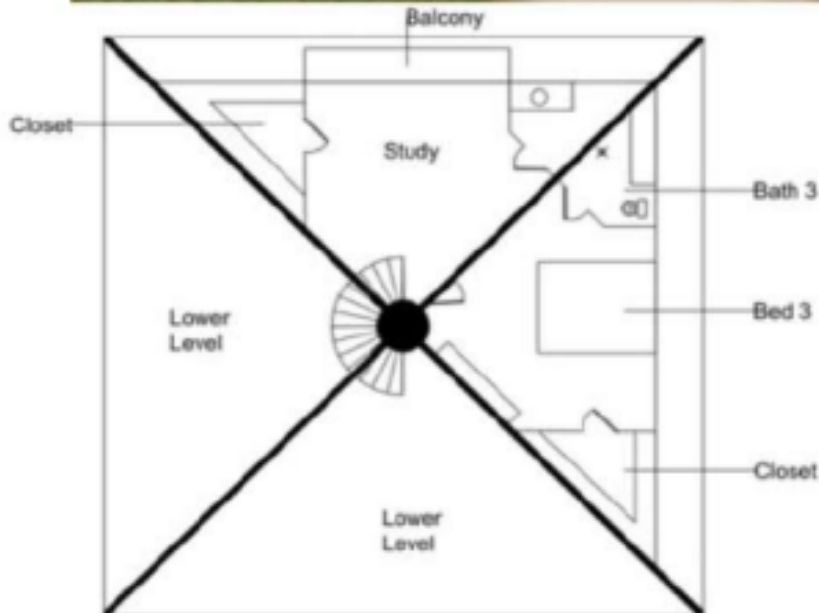
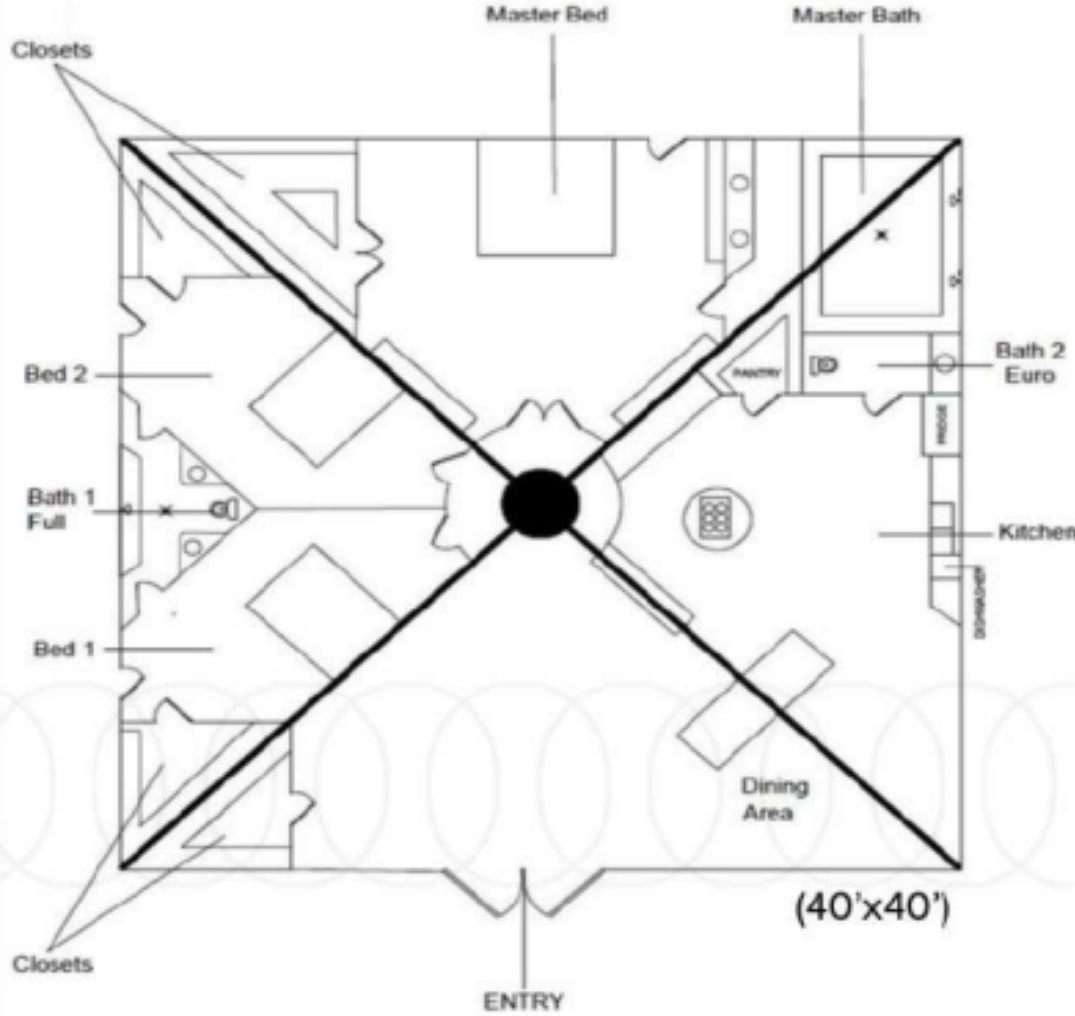
1450-1750 Sq.ft



# BOWWHOMES™ MODEL 9 FLOOR PLAN



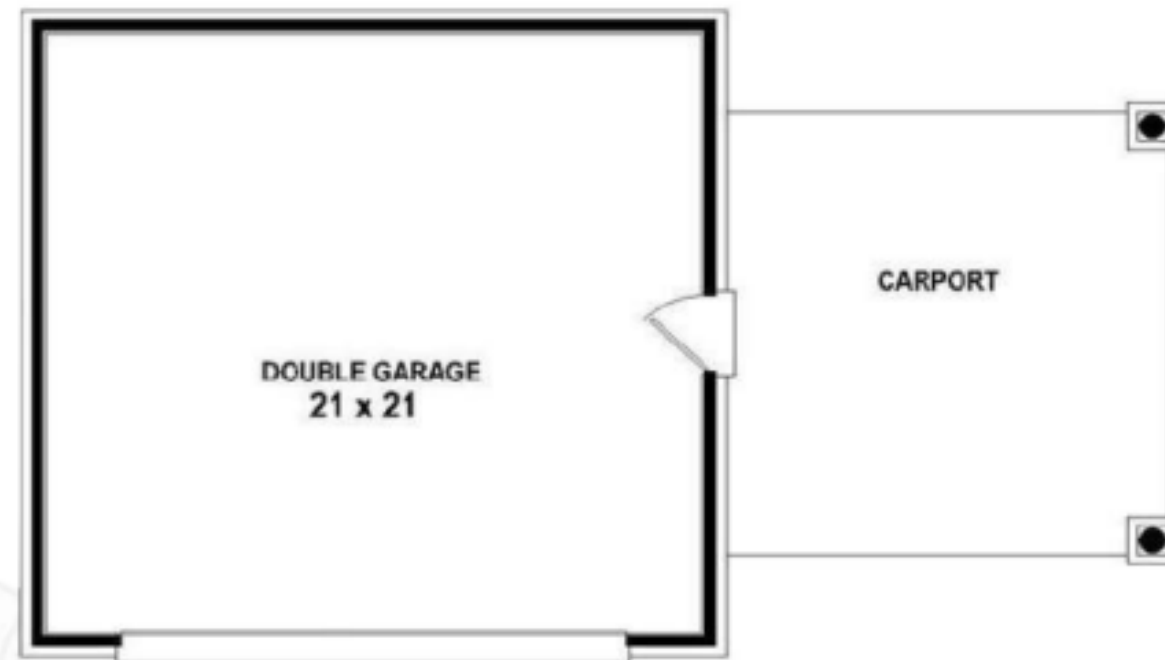
A large spacious home designed for the active & thriving



CONFIDENTIAL INFORMATION – PLEASE DO NOT DISTRIBUTE

2050-2500 Sq.ft

# BOWWHOMES™ 1 & 2 CAR CARPORT/GARAGE



15

**BOWW GARAGE/CARPORT**  
200-400 Sq Ft.

# BOWWHOMES™ STANDARD FEATURES and UPGRADES



**Each BowwHome has an A, B or C grade of technology and style.**

**\*Pricing \$65,000-\$750,000**

**\*FROM 14'-31' FOOT CEILINGS**

- Open, entertaining kitchen great room floorplan
- Energy efficient windows and doors
- Euro spa bathroom design
- Variety of wall, floor and cabinet finishes
- Walk-in closets
- Appliances not included
- Sunroof/wall windows, passive heating
- Ceiling heights are 9-20 feet or more
- Entry level home technology system interfaces with all home systems remote and automated
- Prefab countertops in the kitchen
- Entry level fire safety system, interior
- Central island in the kitchen
- Environmental and conventional fireplace and oven options
- Prefab countertops in the kitchen and bathroom
- Optional one or two story floor plans
- Engineered flooring and selections
- Passive heating and cooling
- Water storage system
- Dry and wet toilet system options
- Staircase for two story options
- Off grid battery and solar entry level systems.
- Water conservation features and monitoring system

**\*BEAUTIFUL OPEN KITCHENS and BATHS**

**\*SOLAR and BATTERY BACKUP**



# BOWWHOMES™ MORE UPGRADES



**Add more  
exciting and  
fun upgrades  
based on your  
living needs**

- Energy efficient automated windows and doors
- Additional choices of wall, floor and cabinet finishes
- Walk-in closets upgrades
- Sunroom windows, passive heating
- Total home technology system interfaces with all home systems remote and automated
- Interactive health and wellness dashboard
- Central vac system
- Advanced fire safety system, interior and exterior
- Central island in the kitchen
- Environmental and conventional fireplace and oven options
- Concrete countertops in the kitchen and bathroom
- Faraday cage; eliminate electromagnetic fields
- Composite wood, and slate flooring on the main level
- Emergency power ventilated and cooling systems
- Passive heating and cooling
- Water storage system
- Dry and wet black water system options
- Grey water cistern option
- Solar, wind<sup>12</sup> and hydro electrical battery backup off-grid system options
- Redundant, passive heating, radiant, geothermal and rooftop thermal system options

**\*ON OR OFF GRID HOME AVAILABLE**

**\*INTELLIGENT HOME INTEGRATION**

**\*HEALTH and WELLNESS DASHBOARD**